

# FOUR STEPS TO SAFELY COUNT NATIVE HOUSEHOLDS



## COVER

Cover your face with a protective mask and your hands with disposable gloves.

Stay at home if you have a fever, are having trouble breathing, or believe you are sick.

Dispose of gloves after each person you assist. Dispose of mask or wash it (if it is cloth) at the end of day. When removing your mask, touch only the straps on the side. Do not touch the front area that covered your face.



## COMPLY

Comply with social distancing guidelines.

Increase the space and decrease contact between you and those you are assisting.

Try to stay at least 6 feet apart if feasible. If it is not feasible, keep as far apart as possible.

You should travel alone, if possible. Otherwise remain 6 feet apart from other outreach staff. Do not greet others with physical touching like handshakes, high-fives, hugging, or skin-to-skin contact.

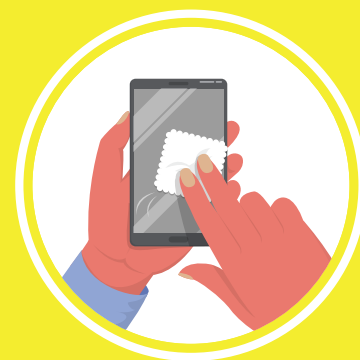
## COMPLETE

Complete the Census questionnaire. Provide assistance to the person completing their Census form.

If you need to demo how to use a computer or mobile device, do so as far apart from the person as possible.

When handing and retrieving a device, consider using a basket or other means of transferring it to the person being assisted without making physical contact with them.

Ask each person you assist to use hand sanitizer that you offer before and after using any devices you provide.



## CLEAN

Clean all mobile devices and work areas used by the person you have assisted. Consider use of wipeable covers for all electronics.

Wipe down any tablet, laptop or phone with device-safe disinfectant after each use. If manufacturer guidance is not available, consider using alcohol-based wipes or spray with at least 70% alcohol content.

Dry surfaces completely to avoid pooling of liquid.

Wash hands with soap and water for at least 20 seconds.

